

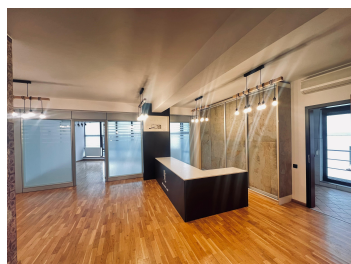
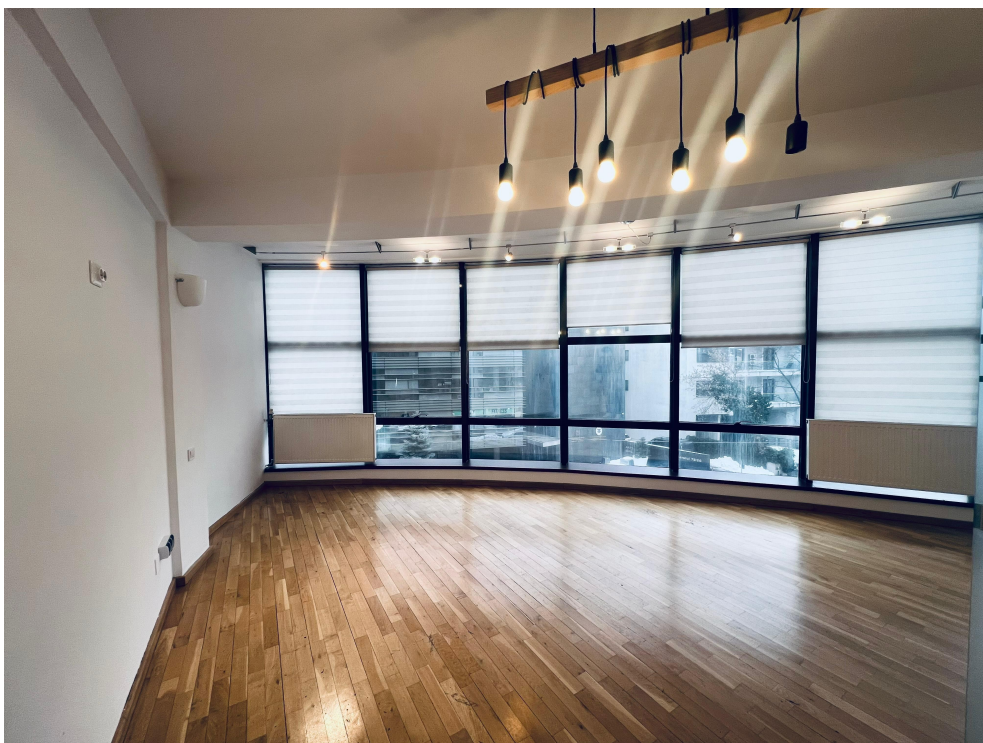
Kiseleff Blvd

Apartment for Rent

4 rooms

CARACTERISTICS

- ▶ **AREA:** Kiseleff Blvd
- ▶ **Usable surface:** 170 sqm
- ▶ **No. of Bedrooms:** 3
- ▶ **No. of Rooms:** 4
- ▶ **No. of Bathrooms:** 2
- ▶ **Parking places:** 1
- ▶ **Floor:** 2
- ▶ **Balconies :** 2



FINISHES/EQUIPMENT

- ▶ **Furniture:** No furnished
- ▶ **Others:** AC, Heating System, Insulated Windows , Faience, Sandstone, Marmura, Garage

DESCRIPTION

Luxury flat situated in a representative building in the Clucerului – Domenii – Kiseleff area, just steps away from the park. This is one of the most prestigious and desirable areas in Bucharest, offering quick access to all major points of interest in the city.

The apartment has a generous surface of 170 sqm, is divided into 4 rooms, and is located on the 2nd floor of the building.

Layout:

Impressive 70 sqm living room

3 bedrooms

Fully equipped closed kitchen

1 bathroom and 1 restroom

2 terraces

Amenities & Finishes:

High-quality solid wood flooring

Air conditioning

Fully equipped kitchen

Private parking space with automatic gate access

The property stands out through its spacious layout, natural light, and premium location in a quiet, green, and highly representative neighborhood.

2,500 EUR

0.04 BITCOIN

1.37 ETHEREUM