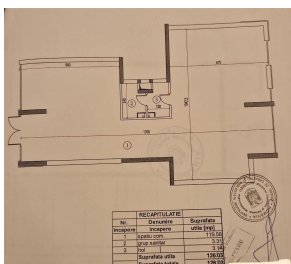


B-dul Marasesti

Commercial Spaces

**CARACTERISTICS**

- ▶ **AREA:** B-dul Marasesti
- ▶ **Usable surface:** 126 sqm
- ▶ **Construction year:** 2008



**DESCRIPTION**

The space is located on M?r??e?ti Boulevard, near Carol Park, on the ground floor of a building constructed in 2008.  
 The space is arranged on the ground floor;  
 All utilities available;  
 Heating provided by the building's central heating system;  
 The space has been rented to an interior design store since 2023.  
 Total usable area: 126 sqm.

459,000 EUR

7.40 BITCOIN

240.94 ETHEREUM