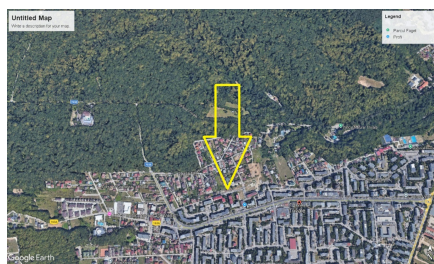
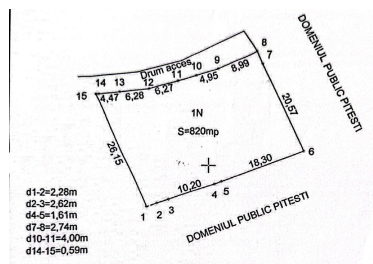
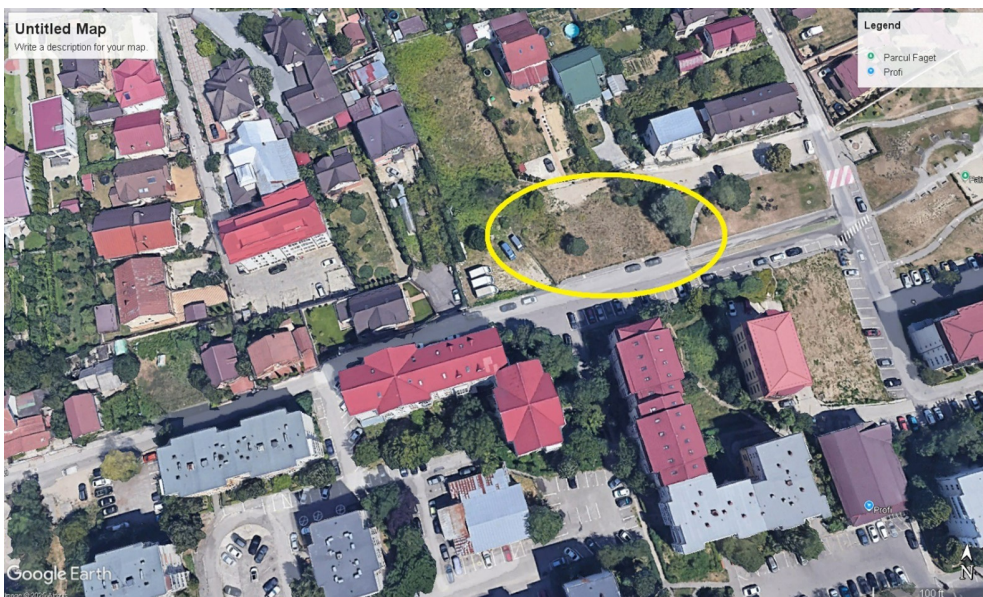


Pitesti

Land for Sale

CHARACTERISTICS

- ▶ **AREA:** Pitesti
- ▶ **Land Surface:** 820 sqm
- ▶ **End-use:** Rezidential



DESCRIPTION

The land offered for sale enjoys a remarkable location, situated in close proximity to Trivale Park. Trivale Park (also known as Trivale Forest) is located in the western part of the city of Pitesti. The park began to be landscaped around 1900 under the guidance of landscape architect Edouard Redont.

It is only a few minutes' walk from the city center, making it highly accessible. The park's promenade alleys, recreation areas, and well-known local spots such as the restaurants "La Grot?" and "Cornul Van?torului", as well as Trivale Monastery, are notable points of interest located in the immediate vicinity of the property offered for sale.

LAND AREA: 820 sqm

FRONTAGE TO ACCESS ROAD: approximately 30 m

350 EUR sqm

0.01 BITCOIN sqm

0.18 ETHEREUM sqm