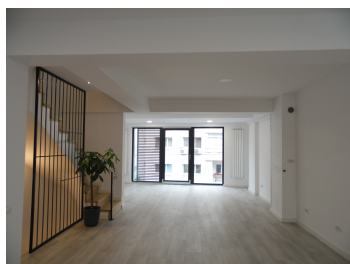


## Ion Mihalache Blvd

### CHARACTERISTICS

- ▶ **AREA:** Ion Mihalache Blvd
- ▶ **Usable surface:** 310 sqm
- ▶ **Built surface:** 390 sqm
- ▶ **Maximum height:** D+P+1E+M



### FINISHES/EQUIPMENT

- ▶ **Others:** AC, Insulated Windows, Faience, Sandstone

### DESCRIPTION

The office building offered for rent is situated at only 10 minutes distance from Victoriei Square with easy access to all means of transportation.

Facilities:

- PC and phone wiring and plugs;
- good quality of materials;
- own central heating;
- air conditioning;
- toilets on each level;
- parking for 2 cars in front of the building;
- open space;

4,500 EUR

0.07 BITCOIN

2.20 ETHEREUM