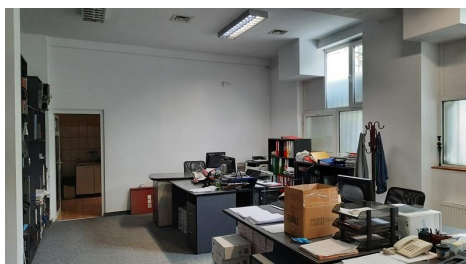


Banu Manta

Commercial Spaces for Rent

CARACTERISTICS

- ▶ **AREA:** Banu Manta
- ▶ **Usable surface:** 249 sqm



DESCRIPTION

The commercial space is situated in Banu Manta area very close to Victoriei Square.
The space is disposed on the ground floor.

Facilities:

- shopping window 20 m
 - 4 sanitary groups
 - own gas central heating
 - 2 access doors in front of the building
 - access door for suppliers
- Available immediately.

3,900 EUR

0.07 BITCOIN

2.42 ETHEREUM