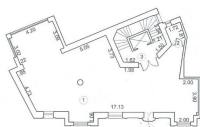


## Romana Square

### CARACTERISTICS

- ▶ **AREA:** Romana Square
- ▶ **Usable surface:** 148 sqm
- ▶ **Maximum height:** S+P+3E



No.	Descrierea	Suprafata, m <sup>2</sup>
1.	GRUP BUCURIE	100,04
2.	GRUP SANITAR	3,47
Suprafata totala *		
3.	CASA SCURT	11,00
4.	BALCON	0,54
Suprafata totala **		
		148,05
Observatii:		Nota

### DESCRIPTION

The office space is located in a prime central area of Bucharest, in the immediate vicinity of Piata Romana and Piata Amzei, just a few minutes walking distance from Piata Romana metro station, ensuring excellent access to all major areas of the city.

The building has been fully renovated and is equipped with all necessary facilities for a modern office headquarters.

#### BUILDING DETAILS:

Height regime: S + P + 3 floors

Fully renovated building

Use: office space

#### LAYOUT:

1 office room

1 open space area

1 sanitary group

The space is suitable for office activities, consulting, or service-based businesses, benefiting from a central location and excellent public transport access.

2,300 EUR + VAT

0.03 BITCOIN + VAT

1.13 ETHEREUM + VAT