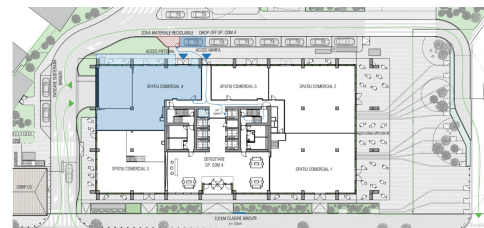
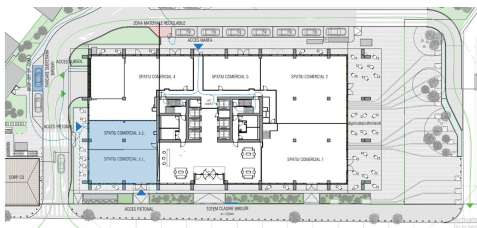
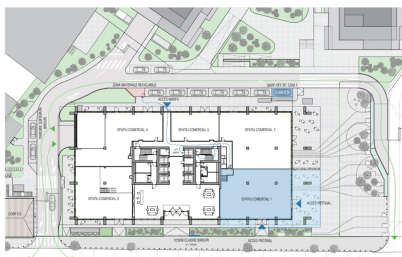


Tineretului Park

Commercial Spaces for Rent

CARACTERISTICS

- ▶ **AREA:** Tineretului Park
- ▶ **Usable surface:** 1000 sqm



Layout

Available areas:

Retail 1 – suitable for a restaurant: 333 sqm
+ 158 sqm terrace

Retail 3.1: 176 sqm + 71 sqm terrace

Retail 3.2: 125 sqm

Retail 4: 365 sqm + 43 sqm terrace

DESCRIPTION

The commercial spaces available for rent are located on the ground floor of a newly built office building in the Tineretului area. The office buildings are situated in the immediate vicinity of the Tineretului metro station, overlooking Tineretului Park, just one stop away from Piața Unirii.

Facilities:

green building

suspended ceiling
BMS (Building Management System)
4-pipe HVAC system
raised floor
fire detection system
parking spaces: 8 units
for units 3.1, 3.2, and 4, there is no kitchen exhaust system