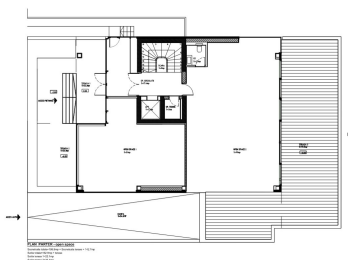
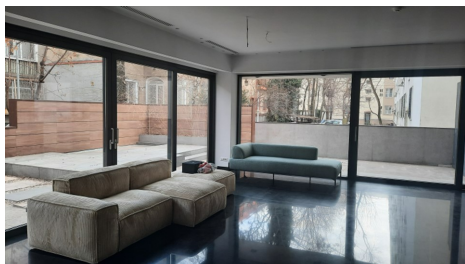


Floreasca

Commercial Spaces for Rent

CARACTERISTICS

- ▶ **AREA:** Floreasca
- ▶ **Usable surface:** 146 sqm
- ▶ **Construction year:** 2016
- ▶ **Maximum height:** D+P+3E



DESCRIPTION

Commercial space offered for rent is situated on Floreasca Avenue very close to the crossroad with Mircea Eliade Boulevard. The space is situated at the ground floor of a residential building, built in 2016.

Facilities:

- the space benefits of a terrace of 100 sqm in the back of the building
- good visibility
- sanitary group;
- the space benefits of 3 entrances;
- fan coil;
- underfloor heating;
- 2 parking places;

7,350 EUR

0.11 BITCOIN

3.72 ETHEREUM