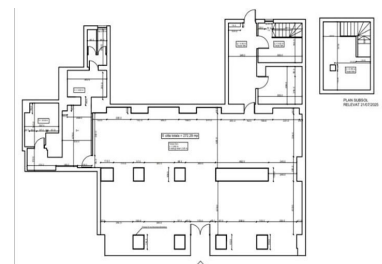
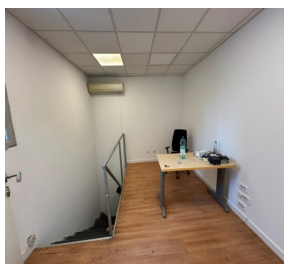
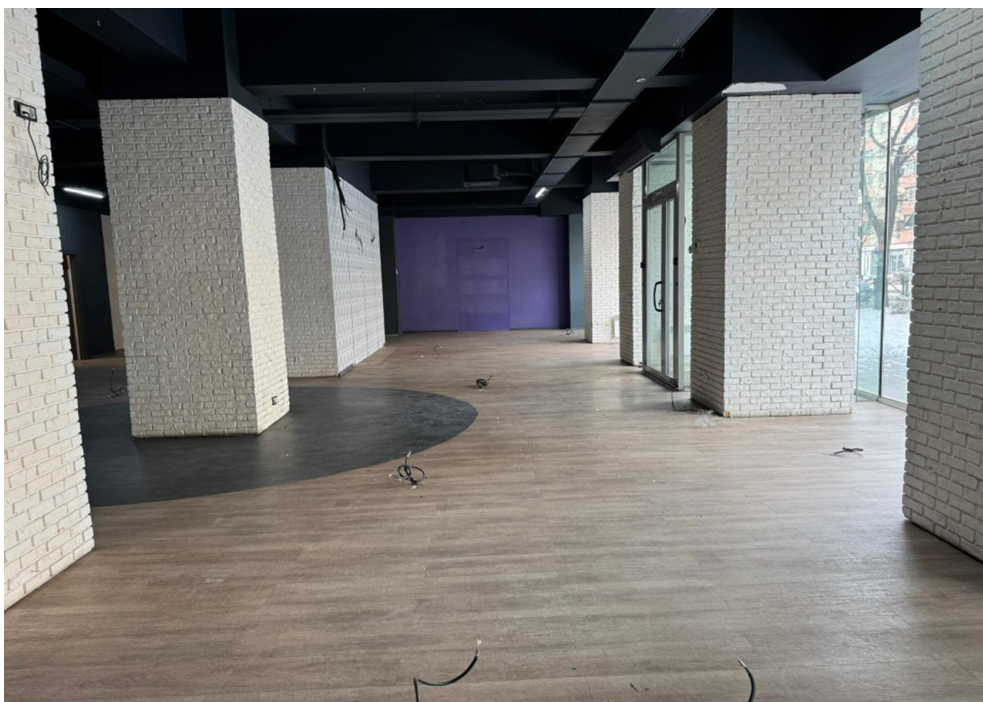


Calea Mosilor

Commercial Spaces for Rent

**CARACTERISTICS**

- ▶ **AREA:** Calea Mosilor
- ▶ **Usable surface:** 290 sqm
- ▶ **Maximum height:** S+P
- ▶ **Showcase:** 16



**DESCRIPTION**

The space is located on Calea Mosilor, benefiting from intense car and pedestrian traffic.  
The space is located on the basement + ground floor.

**Facilities:**

- Generous showcase;
- Open space;
- Access to supply;
- Ground floor: 272 sqm;
- Basement: 18 sqm;
- Rental price for basement: 6 Euro/ sqm/month + VAT

27 EUR sqm + VAT

0.01 ETHEREUM sqm + VAT