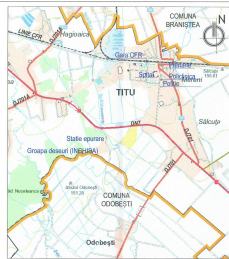
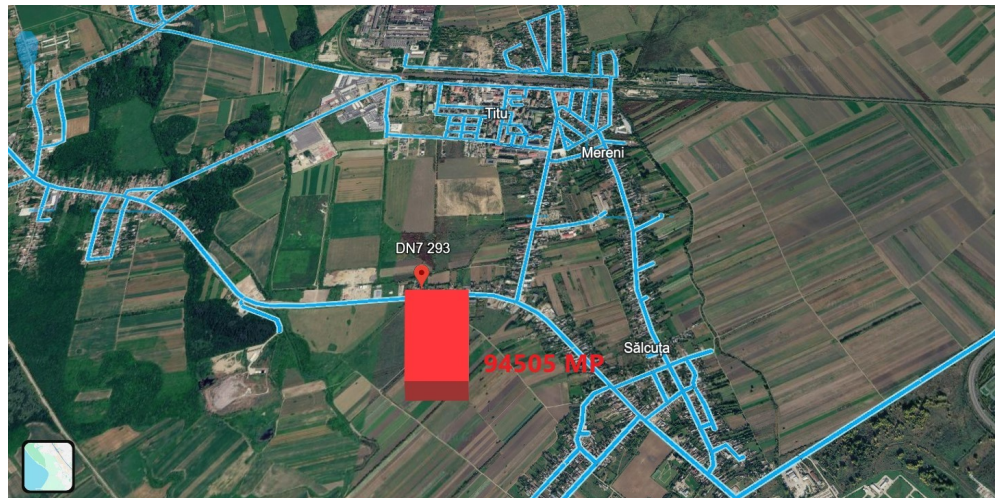


Titu

Land for Sale

CARACTERISTICS

- ▶ **AREA:** Titu
- ▶ **Land Surface:** 94505 sqm
- ▶ **POT:** 60%
- ▶ **CUT:** 1.8
- ▶ **End-use:** Industrial
- ▶ **Opening:** Da



Layout

We present for sale an intravilan industrial land plot located in Titu, one of the most attractive areas for industrial and logistics development near Bucharest.

With easy access to major transport routes and infrastructure continuously developing, this property represents an excellent opportunity for investors, developers, or companies looking to expand their industrial operations.

Property Details:

Total area: 94,505 sqm

Approved PUZ

Building coverage ratio (POT): 60%

Floor area ratio (CUT): 1.8

Maximum building height: 20 m

Direct access from DN7 national road

DESCRIPTION

Utilities available nearby:

electricity (transformer point approx. 100 m away)

gas

running water

sewage system

Location Advantages:

rapidly developing industrial area

quick connection to the A1 Bucharest – Pitesti Highway

efficient access for transport and distribution

ongoing road infrastructure modernization increasing the investment potential of the area

suitable location for long-term industrial developments

Suitable for:

logistics halls

industrial production facilities

warehousing and storage

industrial park development

transport and distribution activities

The property offers excellent development potential in an area with continuous economic growth.

For further information or to schedule a viewing, please contact us.

16 EUR sqm

0.01 ETHEREUM sqm