

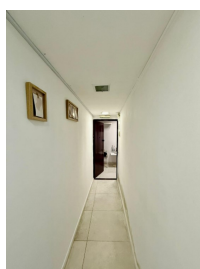
Calea Victoriei

Apartment for Sale

1

CARACTERISTICS

- ▶ **AREA:** Calea Victoriei
- ▶ **Usable surface:** 26.3 sqm
- ▶ **No. of Rooms:** 1
- ▶ **No. of Bathrooms:** 1
- ▶ **Floor:** D
- ▶ **Construction year:** 1936



DESCRIPTION

The studio apartment is located in the semi-basement of a building dating from 1936, situated next to the Romanian Athenaeum, offering quick access to numerous points of interest.

Description:

In a prime location, next to the Romanian Athenaeum, Regatta offers for sale a detached studio apartment with a surface area of 26.3 sqm, located in the semi-basement of a building constructed in 1936.

The area is well connected, with easy access to public transportation, including the metro and STB, as well as shops.

In addition, the proximity to Calea Victoriei adds value and convenience to everyday life.

The studio apartment is equipped with air conditioning, a boiler, electric radiators, and ventilation. It has been renovated and the electrical installation has been replaced.

The building is classified as seismic risk category RS2, according to an expert assessment carried out in 2016.

130,000 EUR

1.96 BITCOIN