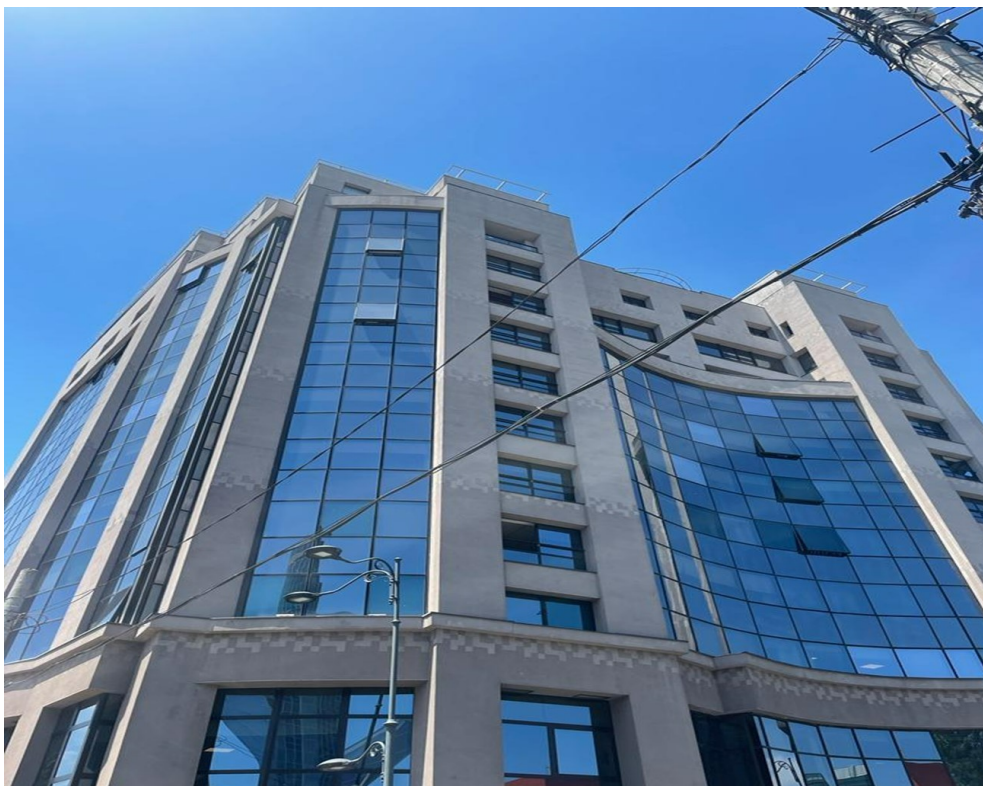


Splaiul Unirii

CARACTERISTICS

- ▶ **AREA:** Splaiul Unirii
- ▶ **Usable surface:** 598 sqm
- ▶ **Maximum height:** D+P+5E



DESCRIPTION

The building is located in the immediate vicinity of Unirii Boulevard, the Chamber of Commerce and Industry of Romania, and Unirii Embankment.

Available office spaces ranging from: 50 sqm – 600 sqm

Facilities:

- security and reception services
- elevator
- air conditioning
- suspended ceiling
- fitted restrooms
- parquet flooring in the office areas

€4.5/sqm/month + VAT – Maintenance

€2.5/sqm/month + VAT – Utilities

13 EUR sqm + VAT

0.01 ETHEREUM sqm + VAT