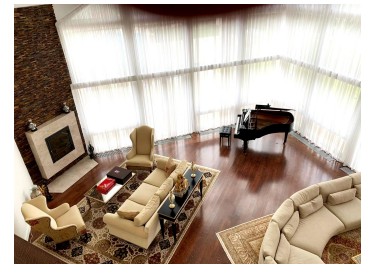


Iancu Nicolae

House for Rent

CARACTERISTICS

- ▶ **AREA:** Iancu Nicolae
- ▶ **Built surface:** 1000 sqm
- ▶ **Land Surface:** 5665 sqm
- ▶ **Garden Surface:** 3000 sqm
- ▶ **No. of Bedrooms:** 5
- ▶ **No. of Rooms:** 8
- ▶ **No. of Bathrooms:** 7
- ▶ **Maximum height:** D+P+1E+M



FINISHES/EQUIPMENT

- ▶ **Others:** Pool, Video Surveillance , Garage, fireplace, AC, Video Inter call , Heating System, Internet and Voice Connection , Underfloor Heating, Storage rooms, Laundry, Asphalted access, Sandstone, Parquet, Faience, Insulated Windows , Marmura

DESCRIPTION

An exceptional property located in one of the most prestigious residential areas in northern Bucharest, Iancu Nicolae - Baneasa, just moments away from Jollie Ville Mall. This exclusive residence stands out through its impressive dimensions, outstanding privacy, premium amenities, and beautifully landscaped grounds, offering an unparalleled lifestyle.

Property Description

Recently renovated to the highest standards, the villa is arranged over a semi-basement, ground floor, first floor, and attic level.

The interior has been thoughtfully designed for comfort and functionality, featuring an impressive 90 sqm reception and living area, 5 spacious bedrooms, 6 bathrooms, guest toilet, office, two separate kitchens with dining and TV areas, terraces, hobby room, and a private cinema room.

The residence offers approximately 1,000 sqm built area and sits on a remarkable 5,665 sqm plot. The beautifully landscaped grounds provide exceptional privacy and include a heated outdoor swimming pool, illuminated tennis court, mature gardens, and multiple outdoor relaxation areas.

A separate staff/guest house complements the main residence and includes two rooms, kitchen, bathroom, and garage facilities.

Finishes & Amenities

Premium quality finishes throughout

Heated outdoor swimming pool

Floodlit tennis court

Professionally landscaped mature garden

Gazebo and outdoor entertainment areas

BMS (Building Management System)
High-performance insulated windows
Air conditioning
Generous dressing rooms
Advanced security system
Automatic irrigation system
Automated entrance gates
3 garages
2 fireplaces
Technical Details

Layout: Semi-Basement + Ground Floor + First Floor + Attic

Usable area: approximately 900 sqm

Built area: approximately 1,000 sqm

Land plot: 5,665 sqm

Landscaped courtyard/garden: approximately 3,000 sqm

Accommodation: 7-8 rooms

A truly rare opportunity to acquire or lease an outstanding estate in one of Bucharest's most sought-after residential locations.

Combining elegance, privacy, generous living spaces, and exceptional leisure facilities, this remarkable property represents luxury living at its finest.

18,000 EUR

0.33 BITCOIN

12.43 ETHEREUM