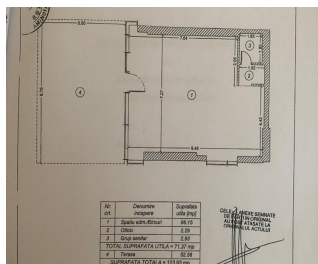


Aviatiei

Commercial Spaces for Rent

CHARACTERISTICS

- ▶ **AREA:** Aviatiei
- ▶ **Usable surface:** 71.37 sqm
- ▶ **Built surface:** 123 sqm
- ▶ **Parking places:** 1
- ▶ **Construction year:** 2018
- ▶ **Maximum height:** P
- ▶ **Showcase:** 8.54



DESCRIPTION

The space is located at the intersection of Nicolae Caramfil Boulevard and Pipera Road, in one of Bucharest's most exclusive areas, within the Her?str?u – One United residential complex and in the immediate vicinity of the Pipera – Barbu V?c?rescu office district.

Usable area: 71.37 sq m

Terrace area: 52.56 sq m

The premises are situated on the Ground Floor.

Facilities:

Frontage: 7.27 m

Restroom

Open-space layout

Suitable for commercial activities, office use, or medical practices.

2,300 EUR + VAT

0.04 BITCOIN + VAT

1.49 ETHEREUM + VAT