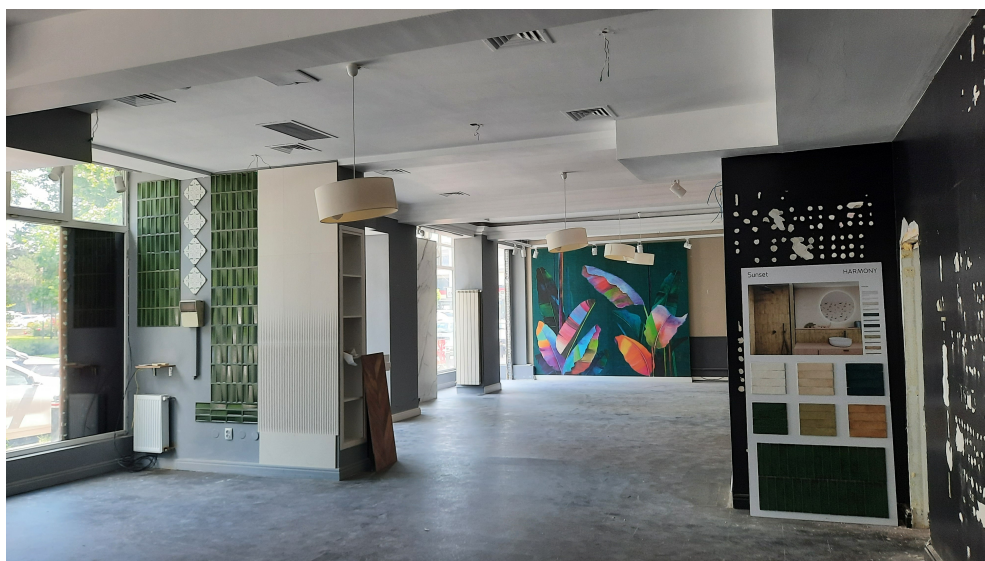


Banu Manta

CARACTERISTICS

- ▶ **AREA:** Banu Manta
- ▶ **Usable surface:** 249 sqm



DESCRIPTION

Office/Retail Space for Rent – Banu Manta Area, Close to Victoriei Square

The property is located in the highly sought-after Banu Manta area, just a few minutes from Victoriei Square, benefiting from excellent visibility and easy access.

The space is situated on the ground floor and is available for immediate occupancy.

Features and amenities:

Generous street frontage with approximately 20 m of display window;

4 restrooms;

Individual gas-fired heating system;

2 main entrances from the front of the building;

Separate access for deliveries and supply operations;

Functional layout suitable for a variety of commercial and administrative activities.

Thanks to its location and configuration, the property is ideal for a corporate headquarters, medical clinic, service center, showroom, or other professional activities.

Available immediately.

4,000 EUR

0.08 BITCOIN

2.92 ETHEREUM