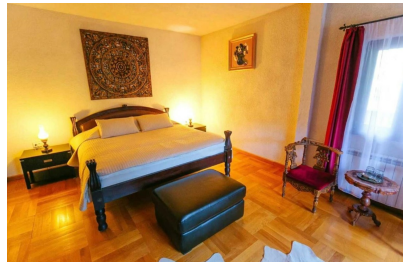


Sinaia

CARACTERISTICS

- ▶ **AREA:** Sinaia
- ▶ **Usable surface:** 400 sqm
- ▶ **Land Surface:** 2182 sqm
- ▶ **No. of Rooms:** 6
- ▶ **No. of Bathrooms:** 7
- ▶ **Construction year:** 2000
- ▶ **Maximum height:** D+P+1E+M



FINISHES/EQUIPMENT

- ▶ **Furniture:** Furnished, With Utilities
- ▶ **Others:** AC, Heating System

DESCRIPTION

Located at the entrance to Sinaia, on Calea Moroieni, just 300 m from DN1, the property benefits from quick access to the resort center and the area's main tourist attractions. Its excellent location offers peace and quiet, fresh mountain air, and views of the Bucegi Mountains, making it ideal both as a private residence and for tourism-related activities.

Guesthouse: Basement + Ground Floor + First Floor + Attic

- 6 bedrooms, each with its own en-suite bathroom
- Spacious living room with fireplace and dining area
-

Fully equipped kitchen

- Terrace and utility rooms
- 7 bathrooms in total

Premium finishes: solid wood flooring, solid wood designer furniture, and wooden joinery with double-glazed windows.

The property is sold fully furnished and equipped. The landscaped yard includes parking spaces, a gazebo, and relaxation areas. The guesthouse benefits from all utilities and its own central heating system, making it suitable both for residential use and for tourism operations.

585,000 EUR

11.41 BITCOIN

423.92 ETHEREUM