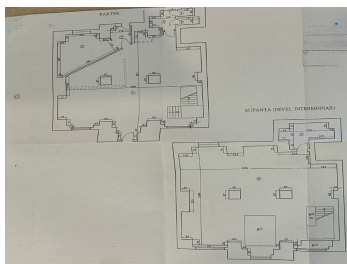


Decebal

Commercial Spaces for Rent

CHARACTERISTICS

- ▶ **AREA:** Decebal
- ▶ **Usable surface:** 227 sqm
- ▶ **Floor:** Parter + Supanta



DESCRIPTION

The space is located on Decebal Boulevard, a vibrant commercial boulevard with strong foot traffic generated by numerous retail stores, supermarkets, cafés, and restaurants.

The property is arranged over the ground floor and mezzanine.

It benefits from an 11-meter shopping window.

The premises include delivery/supply access.

The space is ideally suited for a wide range of commercial activities, particularly food & beverage (HoReCa) businesses.

Total usable area: 227 sq m

Ground floor usable area: 121.7 sq m

Mezzanine usable area: 106.08 sq m

5,200 EUR

0.09 BITCOIN

3.31 ETHEREUM