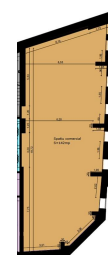
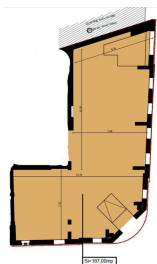
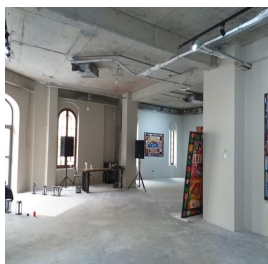


Gradina Icoanei

Inchiriere Spatii Comerciale

CARACTERISTICI

- ▶ **ZONA:** Gradina Icoanei
- ▶ **Suprafata utila:** 329 mp
- ▶ **An constructie:** 2020
- ▶ **Regim de inaltime:** P+D



FINISAJE/DOTARI

- ▶ **Alte dotari:** Centrala Termica, Gresie, Faianta

DESCRIERE

Spatiul este situat intr-un imobil nou construit din zona Gradina Icoanei.

Spatiul este format din:

demisol: 142 mp

parter: 187 mp

Sistem centralizat incalzire/ racire

2 grupuri sanitare

Spatiul este de tip open space

Pretabil clinica medicala, birouri, reprezentanta, showroom

PRET 5.500 EUR + TVA