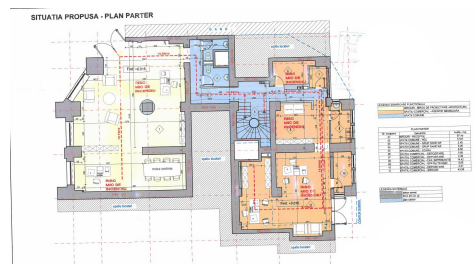
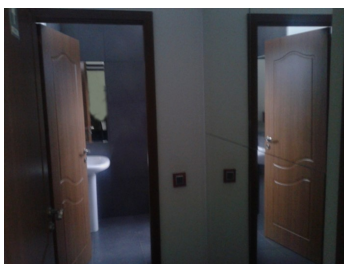


Unirii

Inchiriere Spatii Comerciale

CARACTERISTICI

- ▶ **ZONA:** Unirii
- ▶ **Suprafata utila:** 570 mp
- ▶ **Regim de inaltime:** S+P+M



DESCRIERE

Spatiul se afla situat pe Bulevardul Unirii beneficiind de trafic pietonal si auto.

Facilitati:

- amenajat;
- trafic pietonal si auto intens;
- usa acces fata/ spate;
- centrala proprie;

Suprafete:

Total suprafata utila: 570 mp
Subsol: 96 mp
Parter: 205 mp
Mezanin: 269 mp

10.000 EUR + TVA

0,17 BITCOIN + TVA

5,64 ETHEREUM + TVA